

1. Time It shows current time.

2. Status Window It shows that Start/End of date & time. And when you play forward/backward, recorded time will show. Further, it shows operation buttons.

3. Play Speed button



You can adjust play speed by pushing up/down button (2X 4X 8X 16X 32X 64X)

* This speed function is active when you use or .

You can adjust play speed by pushing up/down button. (1 1/2 1/4 1/8 1/16)

4. Operation button You can search recorded data using these buttons.

- Slider bar goes to Start position.
- Pause
- Play fast backward as much as Speed 2X,4X,8X,16X,32X,64X
- Play forward (1X)
- Play backward (1X)
- Play fast forward as much as Speed 2X,4X,8X,16X,32X,64X
- Slider bar goes to End position.

5. Function Button



Save image as JPEG. Saved file is inside of AJP execution folder. Saved file name is as follows.
Ex) 16_20041012_120529 (DVR channel _ date _ time)



Open the AJP file.



Push EXIT button to quit.

6. Channel number buttons You can select channel number to see pictures from selected channel.

7. Page Button Page button function is active when divided screen number is smaller than actual DVR channel number.

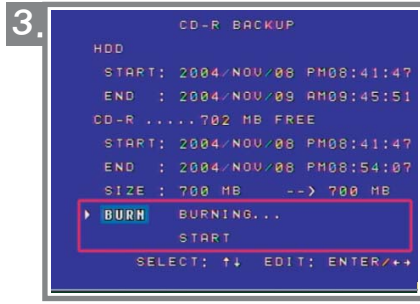
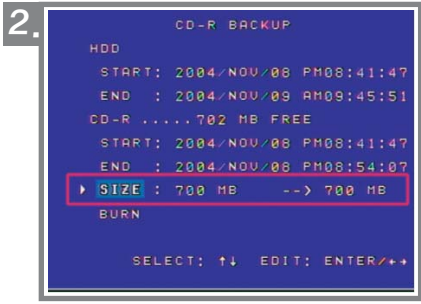
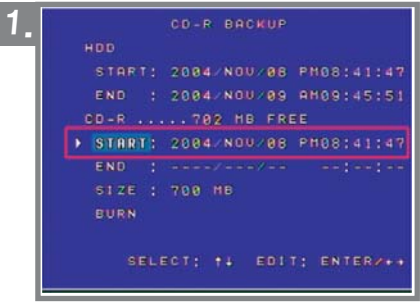
8. You can select 1/4/9/16 screen divisions.



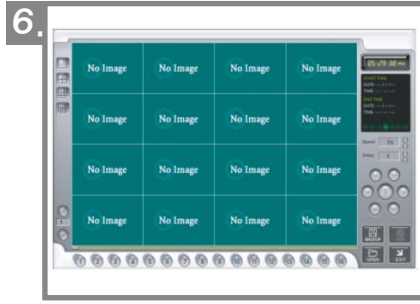
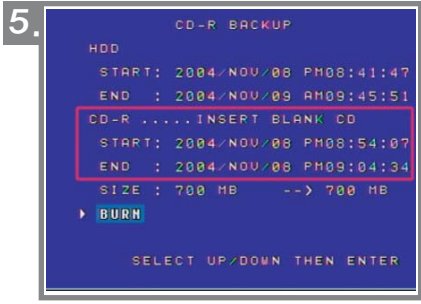
How to back-up with CD-RW

Thank you for using our DVR.

In case 4ch DVR, go into SETUP MENU → MISCELLANEOUS SETUP → HDD INFORMATION → select CD-R BACKUP
In case 8ch & 16ch DVR, go into SETUP MENU → HDD MANAGEMENT → select CD-R BACKUP



1. Insert CD-R media into CD-RW drive and select the start time and date what you want to back-up.
 - * START and END of time/date in HDD content only shows all of data information recorded. You cannot choose or change it.
 - * 702 MB FREE of CD-R content means CD-R media information.
2. Move down to SIZE and push ENTER button. The moment 700MB is selected, cursor will move down to BURN.
 - * End of back-up time will be chosen automatically as much as the size of CD capacity you selected.
 - * You can select the size of CD capacity on SIZE content but you cannot set or change the END of back-up time on CD-R content.
 - * You can only change the START time and date.
3. Push the ENTER button at BURN content. Then, DVR start to burn CD.



4. When burning is completed, CD media will come out automatically. As you can see the above picture, CD-R content shows INSERT BLANK CD and Start Of back-up time will be set as just the end of back-up time automatically. End of back-up time will be selected as the same size as before. You can change this size as much as you want. If you want to back-up continuously, insert another CD media into CD-RW drive and burn it. If you don't want to burn anymore, press MENU button.
 - * During burn CD, it's impossible to cancel.
5. Please install AJP Player in your PC. You can check CD data you burned through AJP player.